



PAINTS™



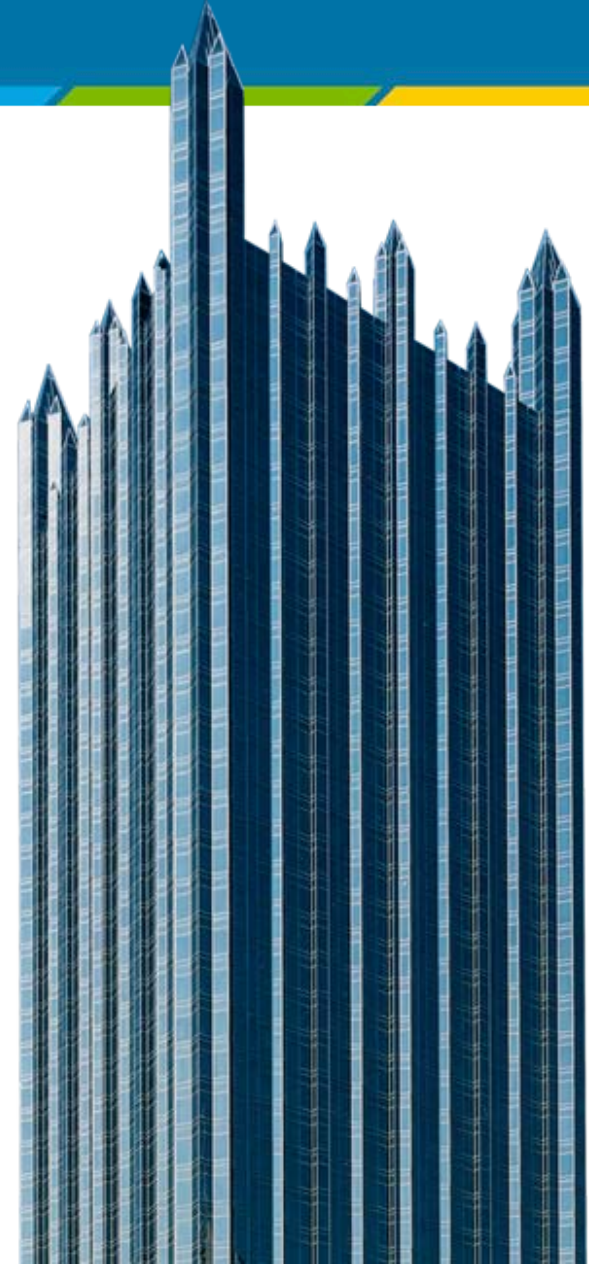
Introducing the **NEW PPG PAINTS™**

House-Hasson Hardware



PPG PAINTS™ Capabilities:

- Wide breadth of quality products under the *PPG Paints* brand
- Strong, national spec presence
- Leading technologies across all segments
- Dedication to partnering with and meeting the needs of professional painters
- Best color platform in the industry with PPG THE VOICE OF COLOR® system
- Knowledgeable and expert service from PPG
- Backed by the power of PPG Industries



The PPG PAINTS™ Product Lineup

We're bringing together all of the PPG labeled products and select PPG PITTSBURGH PAINTS® products under the new *PPG Paints* brand.

<p>INTERIOR</p>	<p>RESIDENTIAL REPAINT MANOR HALL® PURE PERFORMANCE® DIAMOND 350 Ceiling Paint</p>	<p>COMMERCIAL SPEEDHIDE® <i>Speedhide zero</i> ULTRA-HIDE® 250 <i>Ultra-Hide 150</i> Ultra-Hide High Build <i>Speedhide Pro-EV</i></p>	<p>NEW HOME CONSTRUCTION WALL SUPREME™ PRO-FLAT™ MOPAKO™ BUILDER'S SPEC® <i>Mopako PRO</i> (Formerly MULTI-PRO®)</p>	<p>MULTI-FAMILY <i>Multi-Pro Maintenance</i> (Formerly SPEED-WALL®)</p>
<p>EXTERIOR</p>	<p>RESIDENTIAL REPAINT TIMELESS® FORTIS® 450 <i>Manor Hall</i> <i>Fortis 350</i> SUN PROOF®</p>	<p>COMMERCIAL <i>Speedhide</i> <i>Ultra-Hide 150</i> NEW HOME/ MULTI-FAMILY SPEED CRYL® CUSTOM HOME®</p>	<p>INTERIOR/ EXTERIOR <i>Speedhide</i> <i>Speedhide WB Alkyd</i> LIFEMASTER® Accents PRIMERS SEAL GRIP® GRIPPER®</p>	<p>PRIMERS CONT. <i>Pure Performance</i> <i>Speedhide</i> <i>Speedhide zero</i> <i>Speedhide Pro-EV</i> HIGH HIDE Interior HYDROSEALER Exterior STAIN STOMPER Exterior</p>
<p>SPECIALTY</p>	<p>PERMA-CRETE® BREAK-THROUGH!®</p>	<p>PITT-GLAZE® PITT-TECH®</p>		

PPG PAINTS™
Interior Product Lineup



Interior

The PPG PAINTS™ brand product portfolio is a powerful option for independent dealers. It offers premium residential and commercial products to serve the homeowner and pro-painter.



Please note that these labels are representational and may change as they have not been finalized at press time.



PPG PAINTS™ MANOR HALL® interior has been a trusted brand for generations. Manor Hall Interior Paint, Primer & Stain Repellent in One is a super premium latex that was developed to resist household stains through the combination of resin and proprietary formulation. Outstanding hiding is aided by excellent flow and leveling which provides a rich, smooth film for a beautiful finish.

Products



MANOR HALL® Interior Latex Flat

CODE	BASE	SIZES
82-100	Bright	Qts, 1s, 5s
82-110	Pastel	Qts, 1s, 5s
82-120	Midtone	Qts, 1s
82-140	Ultra Deep	Qts, 1s



Manor Hall Interior Latex Satin

CODE	BASE	SIZES
82-400	Bright	Qts, 1s, 5s
82-410	Pastel	Qts, 1s, 5s
82-420	Midtone	Qts, 1s
82-440	Ultra Deep	Qts, 1s



Manor Hall Interior Latex Eggshell

CODE	BASE	SIZES
82-300	Bright	Qts, 1s, 5s
82-310	Pastel	Qts, 1s, 5s
82-320	Midtone	Qts, 1s, 5s
82-340	Ultra Deep	Qts, 1s



Manor Hall Interior Latex Semi-Gloss

CODE	BASE	SIZES
82-500	Bright	Qts, 1s, 5s
82-510	Pastel	Qts, 1s, 5s
82-520	Midtone	Qts, 1s
82-540	Ultra Deep	Qts, 1s



Recommended uses

- Drywall
- Masonry
- Primed Metal
- Walls
- Non-metallic Wallpaper
- Wood

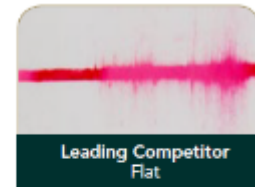


Selling Features

- 100 % Acrylic
- Excellent Adhesion
- Paint & Primer in One
- Spatter resistance
- Lifetime limited warranty
- <50 g/L VOC formula
- Burnish resistance

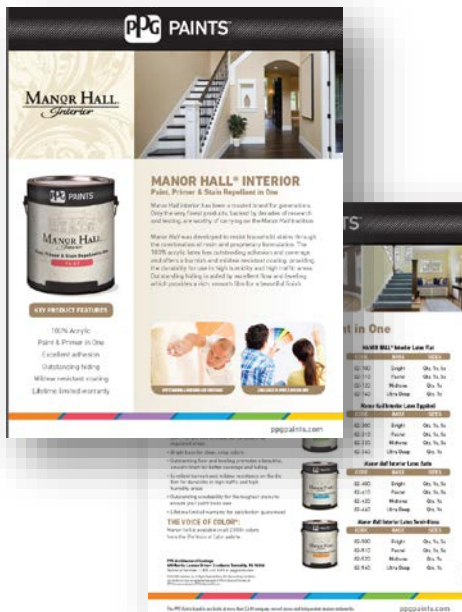
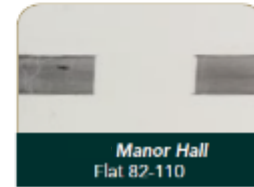
Household Stain

Handle the common every day household stains like lipstick



Greasy Stain

Tackle the tough stains



POS Materials

- Sell Sheet MH17499/69





Our premium low odor, zero VOC* latex is designed to meet the performance requirements of the institutional, commercial and residential markets. *Pure Performance* Interior Latex is formulated to provide excellent hiding, touch up and application properties in addition to minimal odor, zero VOC*'s, and anti-microbial properties

***Colorants added to this base paint may increase VOC levels significantly depending on color choice.**

Products



PURE PERFORMANCE® Flat

CODE	BASE	SIZES
9-100	Pure White	Qts, 1s, 5s
9-110	Pastel	Qts, 1s, 5s
9-120	Midtone	Qts, 1s, 5s
9-140	Ultra Deep	Qts, 1s



Pure Performance Semi-Gloss

CODE	BASE	SIZES
9-500	Pure White	Qts, 1s, 5s
9-510	Pastel	Qts, 1s, 5s
9-520	Midtone	Qts, 1s, 5s
9-540	Ultra Deep	Qts, 1s



Pure Performance Eggshell

CODE	BASE	SIZES
9-300XI	Pure White	Qts, 1s, 5s
9-310	Pastel	Qts, 1s, 5s
9-320	Midtone	Qts, 1s, 5s
9-340	Ultra Deep	Qts, 1s



Recommended uses

- Drywall
- Masonry
- Primed Metal
- Stucco
- Plaster
- Wood



Key Information

- Interior, 100% acrylic latex
- MPI Approval all Sheens
- Paint & Primer in One



Conformance Standards

- All Sheens can earn LEED 2009 credits
- All sheens MPI Green Performance Standard GPS1 & GPS2
- **Flat 9-110** MPI #143 & #143 X-Green
- **Eggshell 9-310** MPI #144 & 144X Green
- **Semi-Gloss 9-510** MPI #147 & #147X Green
- **Primer 9-900** MPI #149

POS Materials

- Sell Sheet MH16400/69



Product Type

PPG PAINTS™ *Speedhide* Pro-EV is the perfect solution for today's contractor who is both performance and cost conscious. Provides excellent hide and coverage. *The Extra Value Choice*

Products



Speedhide Pro-EV Interior Latex Flat

CODE	BASE	SIZES
12-110	White/Pastel	1s, 5s
12-120	Midtone	1s, 5s
12-540	Neutral	1s, 5s



Speedhide Pro-EV Interior Latex Semi-Gloss

CODE	BASE	SIZES
12-510	White/Pastel	1s, 5s
12-520	Midtone	1s, 5s
12-540	Neutral	1s, 5s



Speedhide Pro-EV Interior Latex Eggshell

CODE	BASE	SIZES
12-310	White/Pastel	1s, 5s
12-320	Midtone	1s, 5s
12-540	Neutral	1s, 5s



Recommended uses

- Ceilings
- Primed Metal
- Walls
- Masonry
- Wallboard
- Wood Trim



Key Information

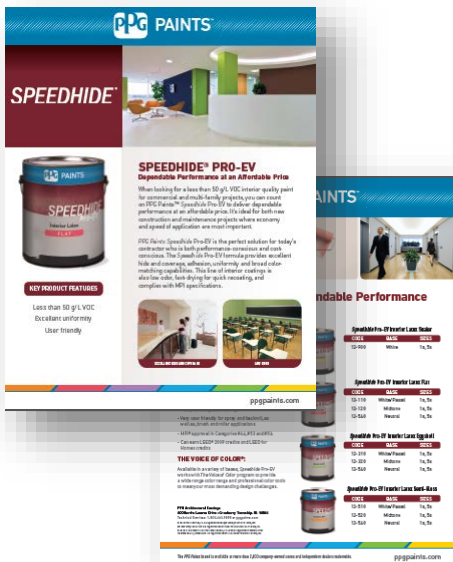
- Second tier new construction & maintenance product line
- Ideal for use on new construction & commercial and industrial buildings maintenance, apartments, schools and office complexes
- All finishes <50 g/L VOC Content

Selling Features

- Excellent Dry Hide
- Good Touch Up Properties on the Flat Finish
- Good Hiding Power and Coverage
- MPI Approval in Categories #44, #53 and #54
- Soap & Water Cleanup
- Can earn LEED 2009 and LEED for Homes Credits

POS Materials

- Sell sheet (P16927)



PPG PAINTS™
Exterior Product Lineup



Exterior

The PPG PAINTS™ brand product portfolio is a powerful option for independent dealers. It offers premium residential and commercial products to serve the homeowner and pro-painter.



Please note that these labels are representational and may change as they have not been finalized at press time.



Product Type

Manor Hall is a super premium, 100% acrylic exterior paint utilizing ManorShield™ urethane technology. Manor Hall exterior provides extraordinary durability and protection against the harsh outdoor elements



Manor Hall Exterior Latex Flat

CODE	BASE	SIZES
70-110	White/Pastel	Qts, 1s, 5s
70-120	Midtone	Qts, 1s, 5s
70-140	Ultra Deep	Qts, 1s



Manor Hall Exterior Latex Semi-Gloss

CODE	BASE	SIZES
70-510	White/Pastel	Qts, 1s, 5s
70-520	Midtone	Qts, 1s
70-540	Ultra Deep	Qts, 1s
70-501	Super White	Qts, 1s, 5s



Manor Hall Exterior Latex Eggshell

CODE	BASE	SIZES
70-310	White/Pastel	Qts, 1s, 5s
70-320	Midtone	Qts, 1s, 5s
70-340	Ultra Deep	Qts, 1s, 5s
70-301	Super White	Qts, 1s



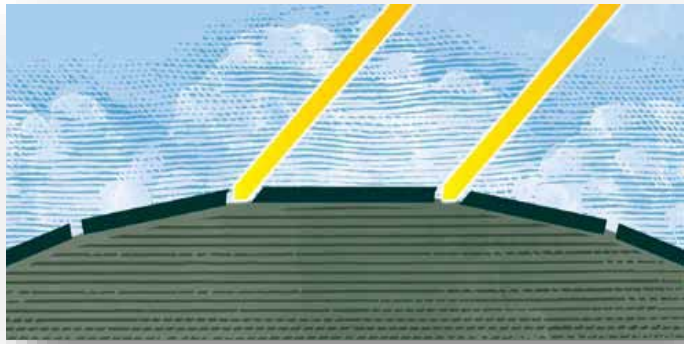
MANORSHIELD™

Recommended uses

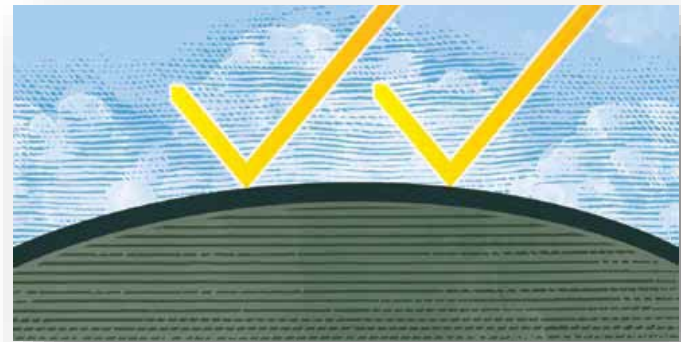
- Doors & Windows
- Primed Metal
- Trim
- Masonry
- Aluminum Siding
- Vinyl Siding



Based on the same technology PPG Industries developed for use on car bumpers and golf balls, *Manor Hall* premium exterior paint features our proprietary MANORSHIELD® urethane formula, providing a flexible film that withstands cracking and peeling.



Paint fails when contaminants, such as water, sunlight and dirt, make their way onto and under the film



With *ManorShield*, these contaminants can't make it through the coating's barrier, providing your home with extraordinary durability and protection from the harsh outdoor elements



MANORSHIELD™



Product Type

Sun Proof paint provides excellent durability from its 100% Acrylic formula, as well as excellent adhesion to chalky surfaces, mildew resistant paint film, and good early moisture exposure resistance



Sun Proof Exterior Latex Flat

CODE	BASE	SIZES
72-110	White/Pastel	Qts, 1s, 5s
72-150	Midtone	Qts, 1s, 5s
72-300	Ultra Deep	Qts, 1s, 5s
72-45	Super White	1s, 5s



Sun Proof Exterior Latex Semi-Gloss

CODE	BASE	SIZES
78-811	White/Pastel	Qts, 1s, 5s
78-815	Midtone	Qts, 1s, 5s
78-300	Ultra Deep	Qts, 1s, 5s
78-45	Super White	Qts, 1s, 5s
78-802	New England Red	1s
78-851	Black	Qts, 1s



Sun Proof Exterior Latex Satin

CODE	BASE	SIZES
76-110	White/Pastel	Qts, 1s, 5s
76-150	Midtone	Qts, 1s, 5s
76-300	Ultra Deep	Qts, 1s, 5s
76-45	Super White	Qts, 1s, 5s
76-151	Black	1s



Key Information

- 100% Acrylic
- Great Value For DIY and Contractors

Selling Features

- Excellent film build properties
- Creates a mildew resistant paint film
- Low temperature cure down to 35°F

Recommended uses

- Brick
- Primed Metal
- Cured Stucco
- Masonry
- Aluminum Siding
- Vinyl Siding



POS Materials

- Sell sheet (P15964)

Product Type

Professional best house paint formulated to meet the performance requirements of professional applicators, to provide excellent adhesion and hide, and mildew resistance on the paint film



Products



Speedhide Exterior Acrylic Latex Flat

CODE	BASE	SIZES
6-610XI	White	1s, 5s
6-650XI	Pastel	1s, 5s
6-651XI	Midtone	1s, 5s
6-653XI	Ultra Deep	1s, 5s



Speedhide Exterior Acrylic Latex Semi-Gloss

CODE	BASE	SIZES
6-900XI	White	1s, 5s
6-901XI	Pastel	1s, 5s
6-902XI	Midtone	1s, 5s
6-904XI	Ultra Deep	1s, 5s



Speedhide Exterior Acrylic Latex Satin

CODE	BASE	SIZES
6-2045XI	White	1s, 5s
6-2110XI	Pastel	1s, 5s
6-2150XI	Midtone	1s, 5s
6-2300XI	Ultra Deep	1s, 5s

Recommended uses

- Doors
- Masonry
- Primed Metal
- Trim
- Siding
- Windows



Key Information

- The contractor's choice, 100% Acrylic formulation
- The flagship commercial product line
- The contractor's choice for performance at a great value
- Most widely specified products on commercial jobs, the workhorse products of our premium contractor line

Selling Features

- Excellent adhesion and hiding
- Fade resistant
- Mildew resistant on the paint film
- Low temperature application to 35°F (2°C)
- Easy application, soap & water clean-up
- Less than 50g/L
- Meets MPI Categories (#10, #11, #15)
- Increased volume solids and viscosity



POS Materials

- Sell sheet (P16958)

Product Type

Our premium interior/exterior acrylic primer is especially formulated to block most stains - water, smoke, ink, markers, and tannin. *Seal Grip* has exceptional adhesion to glossy surfaces.

Products

- 17-921- White Base
- 17-922- Deep Base

Recommended uses

- Aluminum Siding
- Brick
- Concrete and Masonry
- Fiberglass
- Galvanized Steel
- Stucco
- Wood
- Vinyl and Architectural Plastic





Key Information

- The “workhorse” whole-house, stain-blocking primer
- Bonds incredibly well to hard-to-paint surfaces
- Is versatile enough for most surfaces
- Has deep base for broad color capability

Selling Features

- Interior/exterior formula
- Use as a whole house primer on multiple substrates
- Fast drying in as little as one hour
- Blocks out most stains - water, smoke, ink, markers and tannins
- Meets MPI category #3, #6, #17, #39, #137
- Can help earn LEED® 2009 credits Less than 50g/L

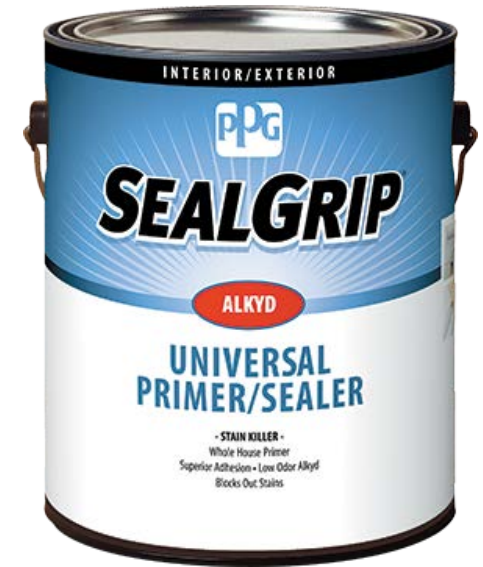


POS Materials

- Sell sheet (P16448/69)

Product Type

SEAL GRIP Interior/Exterior Alkyd Universal Primer/Sealer provides both excellent adhesion to a wide range of surfaces and stain blocking over a variety of common stains including water, nicotine, smoke, ink, markers, and wood tannin stains.



Products

- 17-941NF- White Base

Recommended uses

- | | |
|----------------------------|-----------|
| • Brick | • Masonry |
| • Cement Composition Board | • Plaster |
| • Concrete and Masonry | • Stucco |
| • Gypsum Wallboard-Drywall | • Wood |



Key Information

- Perfect for bleeding wood
- Topcoats in 4-24 hours

Selling Features

- Interior/exterior formula whole house primer
- Excellent adhesion-adheres to a wide range of substrates
- Low odor alkyd- Less than traditional alkyds
- Blocks out most stains - water, smoke, ink, markers, and tannins
- Great for fire and water damage; perfect for restoration
- Interior/exterior formula
- Meets MPI Category #69, Primer, Bonding, Solvent Based



POS Materials

- Sell sheet (P16448/69)

PPG
THE VOICE OF COLOR®

PPG PAINTS™ PPG THE VOICE OF COLOR®

VISUALIZE YOUR FAVORITE COLORS

Drag and Drop to Paint

touch anywhere to begin



SAVED COLORS

Browse All Colors

Color

BLUE FJORD PPG1163-6

EARTHY OCHRE PPG1086-5

ALMOND CREAM PPG1086-

DELICATE WHITE PPG1001-1

No Color

No Color

No Color

No Color

No Color

No Color

No Color

No Color



Over 2,000 colors and best in the market!



The 4' units can be arranged in various configurations to fit your needs

Together, this modular display creates 12' of gorgeous and easy color solutions!

4' Core Display

Features 1,330 colors, including:

- Trending colors
- Classic, most-tinted in the market
- Designer's favorites
- The best neutrals
- Large 4" x 7" take-home chips
- 9 Irresistible inspirational brochures
- 2 Sheen guides - one dark, one light



4' Harmony Display

- Unique 5-color Harmony chips to show how to coordinate paint colors with all of the other colors in the room
- A New Color Story in Each Collection
- Room images on back of chips
- 32 Coordinated colors in single color chips
- Large 4" x 4" take-home chips
- 295 unique, stand-alone colors organized into 9 personal styles and moods



A new color story in each collection



It's all about Blue. One moment it's soft and tranquil, the next time, it's bold and patriotic.



A friendly color, Green symbolizes renewal and embodies thoughts of springtime.



Where there is Yellow, there is light. The purity of yellow expresses cheer and optimism.

4' Digital Display

- 42" touchscreen completely integrated for your customers to shop by color, project, tip, color combinations, and product detail
- See colors big: paint a room with any color
- Bar code reader reads every color chip and produces a display on screen
- Palette-at-a-Glance shows all colors by color family in a flip book format



Single color chips



60% Dominant Color 10% Accent Colors 30% Intermediate Color



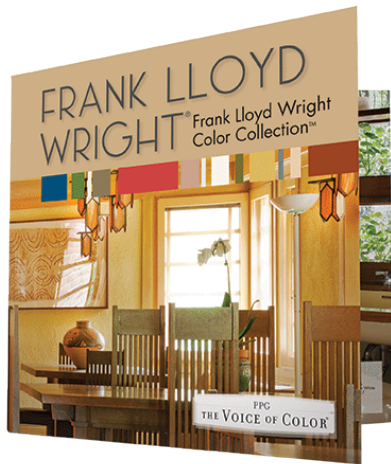
Mix it Up! These 5 colors work anywhere in your room – wall or floor.



60:30:10 Decorating Rule

Our Harmony Color Chips are carefully created, 5-color designer palettes that apply to all of the visual elements in your home, not just to paint. When used with our 60:30:10 rule for successful color proportion, these palettes are certain to help you create a beautiful and harmonious atmosphere in your room, or throughout your entire room.

Frank Lloyd Wright™

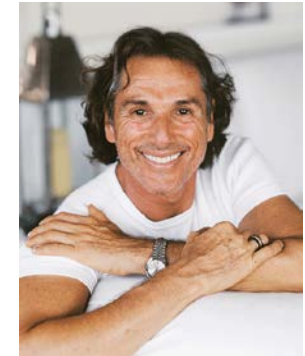
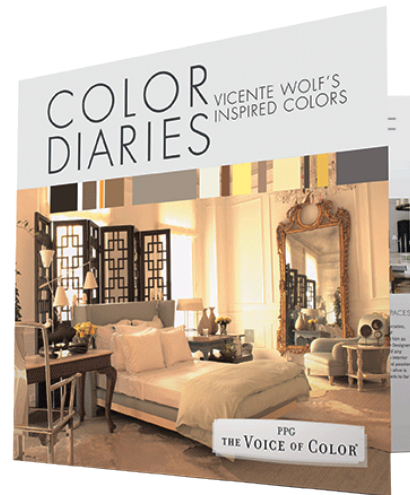


Frank Lloyd Wright

Features The Fallingwater® and Taliesin West™ Color Palettes

The style of Frank Lloyd Wright™ is timeless. To achieve a contemporary look and keep with Wright's design principle, we have provided his stunning palettes and design tips to emulate his style.

Vicente Wolf



Features colors personally selected by acclaimed international designer Vicente Wolf

Color Diaries is a reflection of inspirations from Vicente's travels around the world. The hues and harmonies herein are a gift to all from inside his visionary viewpoint.